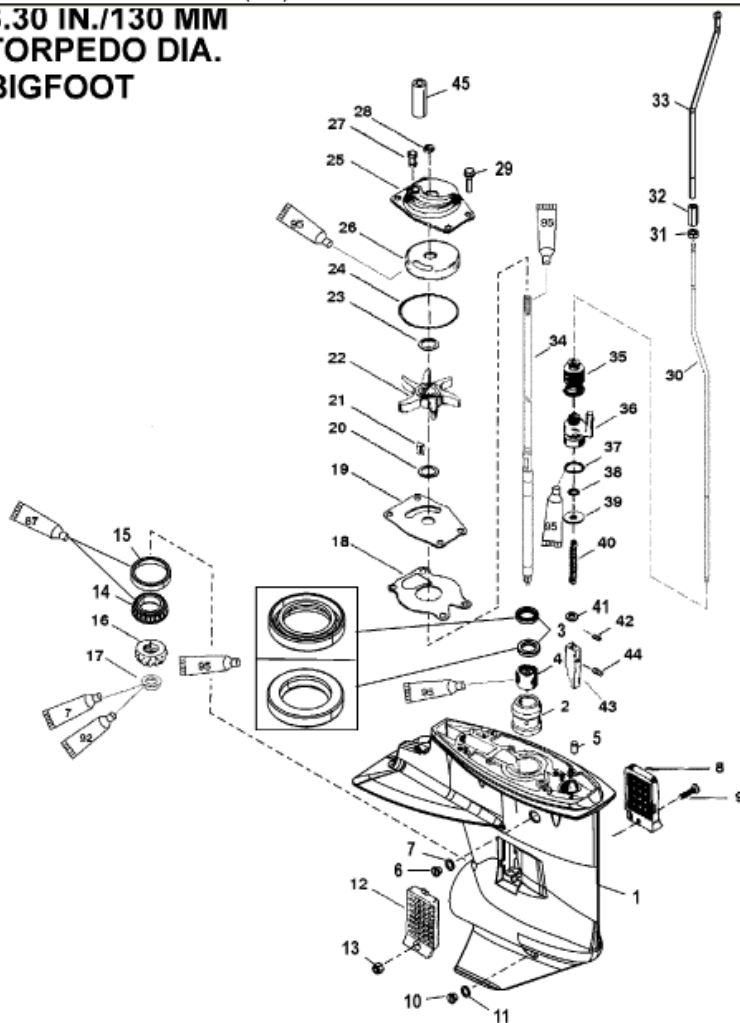


**3.30 IN./130 MM
 TORPEDO DIA.
 BIGFOOT**



2491

| Parts List | | | | | | |
|------------|-------|----------|-------------------------------|-----|-----------------------------|----------|
| Ref | Class | Part | Description | Qty | Comment | Footnote |
| - | 1665 | 8669T33 | GEAR HOUSING ASSEMBLY, Con | 1 | (Long - Black) | |
| - | 1665 | 8669A46 | GEAR HOUSING ASSEMBLY, Con | 1 | (X-Long - Black) | |
| 1 | 1665 | 8669A21 | GEAR HOUSING ASSEMBLY, B. | 1 | (Basic - Black) | |
| 2 | | NSS | NOT SOLD SEPARATE, Sleeve | 1 | | |
| 3 | 26 | 99325 | SEAL | 2 | | 15 |
| 4 | 31 | 41326 | ROLLER BEARING | 1 | | |
| 5 | 17 | 85500 | PIN, Dowel (.187 x .530) | 2 | | |
| 6 | 10 | 799530 2 | SCREW KIT, (.375-16 x .250) C | 1 | | |
| 7 | 12 | 19183 3 | SEAL | 1 | | 15,18 |
| 8 | 35 | 41133 | SCREEN, Water Inlet Port | 1 | | |
| 9 | 10 | 40031112 | SCREW, (M5 x 40) | 1 | | |
| 10 | 10 | 799530 2 | SCREW KIT, (.375-16 x .250) C | 1 | | |
| 10 | 22 | 67892A 1 | FITTING KIT, Plug Fill/Drain | 1 | SN# USA-0T979999/BEL-0P3254 | |
| 10 | 22 | 67892A05 | PLUG KIT, Drain (Magnetic) | 1 | SN# USA-0T980000/BEL-0P3254 | |
| 11 | 12 | 19183 3 | SEAL | 1 | | 15,18 |
| 12 | 35 | 41134 | SCREEN | 1 | | |
| 13 | 11 | 40136 5 | NUT, (M5) | 1 | | |
| 14 | 31 | 98294A 1 | ROLLER BEARING ASSEMBLY | 1 | | |
| 15 | | NSS | NOT SOLD SEPARATE, Cup | 1 | | |
| 16 | 43 | 854498 | PINION GEAR, (12-29) | 1 | | |
| 17 | 11 | 828490 | NUT | 1 | | |
| 18 | 27 | 99326 1 | GASKET | 1 | | 15,18 |
| 19 | | 85083 | FACE PLATE | 1 | | 18 |
| 20 | 12 | 86645 1 | WASHER | 1 | | 15,18 |
| 21 | 28 | 85119 | KEY | 1 | | 18 |
| 22 | 47 | 85089 10 | IMPELLER | 1 | | 18 |
| 23 | 12 | 86645 1 | WASHER | 1 | | 15,18 |
| 24 | 25 | 69202 | O-RING | 1 | | 15,18 |
| 25 | 46 | 99157A 1 | WATER PUMP ASSEMBLY | 1 | SN# USA-0T800999/BEL-0P2679 | 18 |
| 25 | 46 | 99157A02 | WATER PUMP ASSEMBLY | 1 | SN# USA-0T801000/BEL-0P2680 | 18 |
| 26 | | NSS | NOT SOLD SEPARATE, Insert | 1 | | 18 |
| 27 | 26 | 85090 | SEAL | 1 | SN# USA-0T979999/BEL-0P3254 | 15,18 |
| 27 | 26 | 85090001 | SEAL | 1 | SN# USA-0T980000/BEL-0P3254 | 15,18 |
| 28 | 25 | 86203 | RING | 1 | | 15,18 |
| 29 | 10 | 824832 4 | SCREW, (M6 x 16) | 4 | | |
| 30 | | 854503 | SHIFT SHAFT | 1 | (Long) | |
| 30 | | 854504 | SHIFT SHAFT | 1 | (X-Long) | |
| 31 | 11 | 40021 2 | NUT, (M6) | 1 | | |
| 32 | | 822419 | COUPLER | 1 | | |
| 33 | | 852994 1 | SHIFT SHAFT, Upper | 1 | | |
| 34 | 45 | 854501 | DRIVE SHAFT | 1 | (Long) | |